

TWO MACDONNELL ROAD



Experience meticulous service just minutes from Hong Kong's must-see sights at **Two MacDonnell Road**. Conveniently set in a vibrant residential neighborhood within the city's prestigious Mid-levels, Central, this restful oasis boasts green tropical views backed by Hong Kong's iconic skyline. With classically decorated rooms, private gym, popular restaurant and free shuttle bus service, the property enjoys an unrivalled location close to Central's key financial district and entertainment hubs Lan Kwai Fong and SoHo. Immediately surrounding the property are the city's lush Botanical Gardens and Hong Kong Park, making this hidden gem perfectly located for work, play and restoration.

Facilities & Services

Amenities

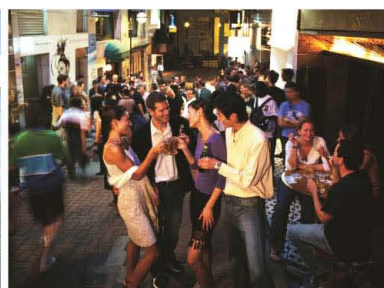
- Wireless Broadband Internet Connection
- Cable TV
- DVD Player
- Voice Mail and IDD Telephone Lines
- In-room Electronic Safe
- Fully-equipped Kitchenette with
 - Microwave Oven
 - Refrigerator
 - Electric Stove with Hood
 - Utensils and Cookware
- Iron and Ironing Board (upon request)
- Rollaway Bed (upon request)
- Baby Cot (upon request)

Facilities

- Café on 8
- Business Centre
- Fully-equipped Gymnasium
- Car Park

Guest Services

- 24-hour Reception
- Housekeeping Service
- Shuttle Bus Service to Central and Admiralty
- In-residence Dining
- Laundry and Dry Cleaning Service
- 24-hour Security
- Babysitting





Dining

Café on 8's casual brasserie recalls 1930's Art Deco with checkered flooring, black and white images and elegant ironwork details. A firmly established favourite among local residents, diners come to savour the restaurant's Pan-Asian and European fare. The space opens out to an impressive green park with shimmering skyscrapers in the distance, making this a wonderful spot to take pause.

Airport & Attraction Transportation

By Car / Taxi

- The Hong Kong Convention and Exhibition Centre 8 mins
- The Peak 14 mins
- Hong Kong Airport Express Station 9 mins
- Hong Kong International Airport 30 mins

By Walk

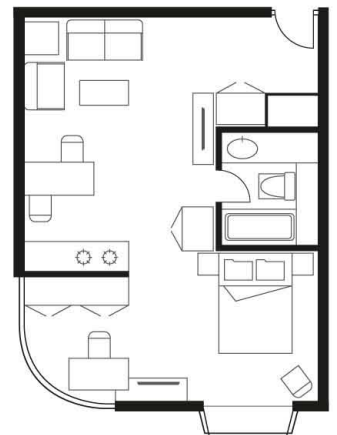
- Hong Kong Park 10 mins
- The Hong Kong Zoological and Botanical Gardens 1 min
- Lan Kwai Fong / SoHo 8 mins
- Central CBD / The Landmark 8 mins
- Pacific Place 12 mins

Room Type

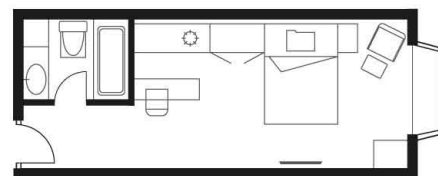
213 units	Size (sq.ft)	Size (sq.m)
Standard / Superior Room	336	31
Junior Suite	470	49
Business Suite	560	52
Deluxe Suite	650	60
Family Suite (Two-Bedroom)	750	70



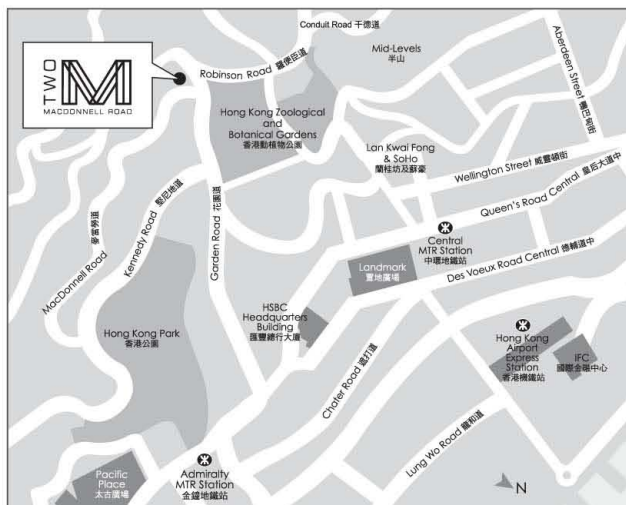
Junior Suite



Deluxe Suite



Standard / Superior Room



TWO MACDONNELL ROAD

2 MacDonnell Road, Mid-Levels, Hong Kong

Tel: 852 2132 2132 Fax: 852 2131 1000 E-mail: resv@mr2.com.hk

www.lansonplace.com