

# TWO MACDONNELL ROAD



Situated amongst the tranquil beauty of Central Mid-Levels, yet just minutes away from the hustle and bustle of Central CBD, Two MacDonnell Road is the perfect short- and long-term living solution for travellers and expats seeking a place that feels like home while in Hong Kong.

Nestled between the beauty of Victoria Peak and Hong Kong's iconic skyline, Two MacDonnell Road provides a thoughtfully designed, restful residential environment. Each room and suite comes with full amenities, including complimentary Wi-Fi. You can re-energise yourself with our private gym, or walk through the lush Botanical Gardens or Hong Kong Park right next door. And if you're looking for a place to gather with friends or co-workers, you can enjoy our delectable creations or celebrate with delicious cocktails at café bar on 8.

## Facilities & Services

### Amenities

- Wireless Broadband Internet Connection
- Cable TV
- DVD Player (available in suites only)
- Voice Mail & IDD Telephone Lines
- In-room Electronic Safe
- Fully-equipped Kitchenette with
  - Microwave Oven
  - Refrigerator
  - Electric Stove with Hood
  - Utensils and Cookware
- Iron and Ironing board (upon request)
- Rollaway Bed (upon request)
- Baby Cot (upon request)

### Facilities

- café bar on 8
- 24-hour fully-equipped Gymnasium
- Launderette
- Car Park (upon request)

### Guest Services

- 24-hour Reception
- Housekeeping Service
- Shuttle Bus Service to Central
- In-room Dining
- Laundry and Dry Cleaning Service
- 24-hour Security
- Babysitting





## Dining

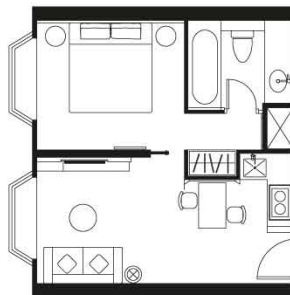
café bar on 8 is a place for good food and good fun. Featuring stunning views of Hong Kong's lush mountainside and city skyline, this newly renovated café is a favourite among locals and residents alike. Whether it's a quick continental breakfast, a convenient 'grab & go' meal, a tempting lunch buffet in our show kitchen, a refreshing afternoon tea, or an evening of delicious casual dining, there's something to please every palate.

## Business Districts & Attractions

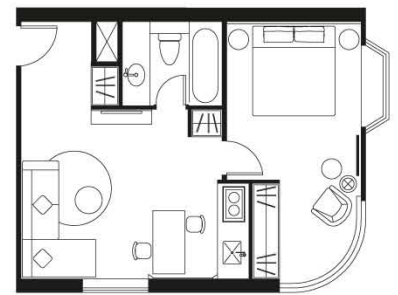
- |  |         |   |                                     |         |   |
|--|---------|---|-------------------------------------|---------|---|
| • Hong Kong Park                                 | 8 mins  | 🚶 | • Lan Kwai Fong / SoHo              | 10 mins | 🚶 |
| • The Hong Kong Zoological and Botanical Gardens | 1 min   | 🚶 | • Central CBD / The Landmark        | 10 mins | 🚶 |
| • The Hong Kong Convention and Exhibition Centre | 8 mins  | 🚗 | • Pacific Place                     | 15 mins | 🚶 |
| • The Peak                                       | 14 mins | 🚗 | • Hong Kong Airport Express Station | 9 mins  | 🚗 |
|  |         |   | • Hong Kong International Airport   | 30 mins | 🚗 |

## Room Type

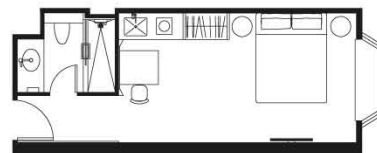
215 units	Size (sq.ft)	Size (sq.m)
Standard / Superior Room	336	31
Junior Suite	470	49
Business Suite	560	52
Deluxe Suite	650	60
Family Suite (Two-Bedroom)	750	70



Junior Suite



Deluxe Suite



Standard / Superior Room



## TWO MACDONNELL ROAD

2 MacDonnell Road, Mid-Levels, Hong Kong

Tel: 852 2132 2132

Fax: 852 2131 1000

Email: [resv@mr2.com.hk](mailto:resv@mr2.com.hk)

[www.twomr.com.hk](http://www.twomr.com.hk)



[twomrhk](http://twomrhk)

